



# BK BIRLA CENTRE FOR EDUCATION

SARALA BIRLA GROUP OF SCHOOLS  
SENIOR SECONDARY CO-ED DAY CUM BOYS' RESIDENTIAL  
SCHOOL



PRE-MIDTERM (2024-25)

SCIENCE

Class: VII

Date: 31/07/24

Admission No:

Duration: 1 Hr

Max. Marks: 25

Roll No:

General Instructions:

- This question paper consists of 12 questions in 3 sections.
- Section A consists of 3 objective type questions carrying 1 mark each.
- Section B consists of 5 Very Short questions carrying 02 marks each.
- Section C consists of 4 Short Answer type questions carrying 03 marks each.

## SECTION A

Select and write the most appropriate option out of the four options given for each of the questions 1 - 3.

- Which of the following is a base? 1  
(a) NaOH                      (b) H<sub>2</sub>SO<sub>4</sub>                      (c) HCl                      (d) CaCO<sub>3</sub>
- The SI unit of heat: 1  
(a) Joule                      (b) Kg                      (c) Newton                      (d) None of these

**Direction:** The question below consists of an Assertion (A) and a Reason (R). Use the following key to choose the appropriate answer.

- If both assertion and reason are correct and reason is correct explanation of the assertion.
- If both assertion and reason are correct, but the reason is not the correct explanation of the assertion.
- If assertion is correct, but reason is incorrect.
- If assertion is incorrect, but reason is correct.

3. ASSERTION (A): Our mouth has the salivary glands which secrete saliva with amylase enzyme.

REASON (R): The saliva breaks down the starch into simple sugar.

1

## SECTION B

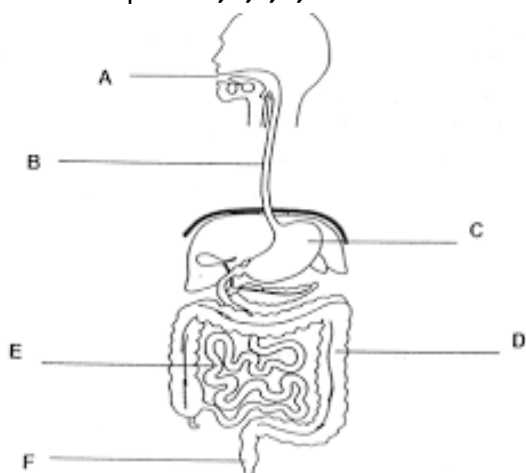
Question No. 4 to 8 are very short answer questions

4. Name any two mineral acids. 2
5. Differentiate between acids and bases. 2
6. Give reason:  
cooking vessels are usually made of metals while its handle is made of plastic. 2
7. Differentiate between sea breeze and land breeze 2
8. Draw neat labelled diagram of nutrition in Amoeba . 2

## SECTION C

Question No. 9 to 12 are short answer questions

9. (a) What are indicators? Give one example. 3  
(b) Write a short note on tooth decay.
10. Explain the working of the thermos flask with the help of a diagram. 3
11. Label the parts **a,b,c,d,e and f** in the human digestive system . 3



12. Explain the following terms: 3
- a. Digestion
  - b. Stomach of ruminants.
  - c. villi

**\*\* Best of luck\*\***